

Spare parts list

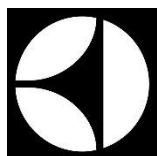
Combination fridge-freezers, bottom freezer
3795

PNC	ELC	Brand	Model	Market
925060221	00	Electrolux	EBB3200MG XTH	TH

Electrolux

Publication-No.
599794673
2016/03/17
THF

Fridge-freezers,
CKD-products



Item	PNC	ELC	Brand	Model	Market
A	925060217	00	Electrolux	EBB3200MG XVN	VNE
A	925060218	00	Electrolux	EBB3200MG XPH	PHH
A	925060221	00	Electrolux	EBB3200MG XTH	THE
A	925060222	00	Electrolux	EBB3200MG XID	IDH

SAFETY WARNING

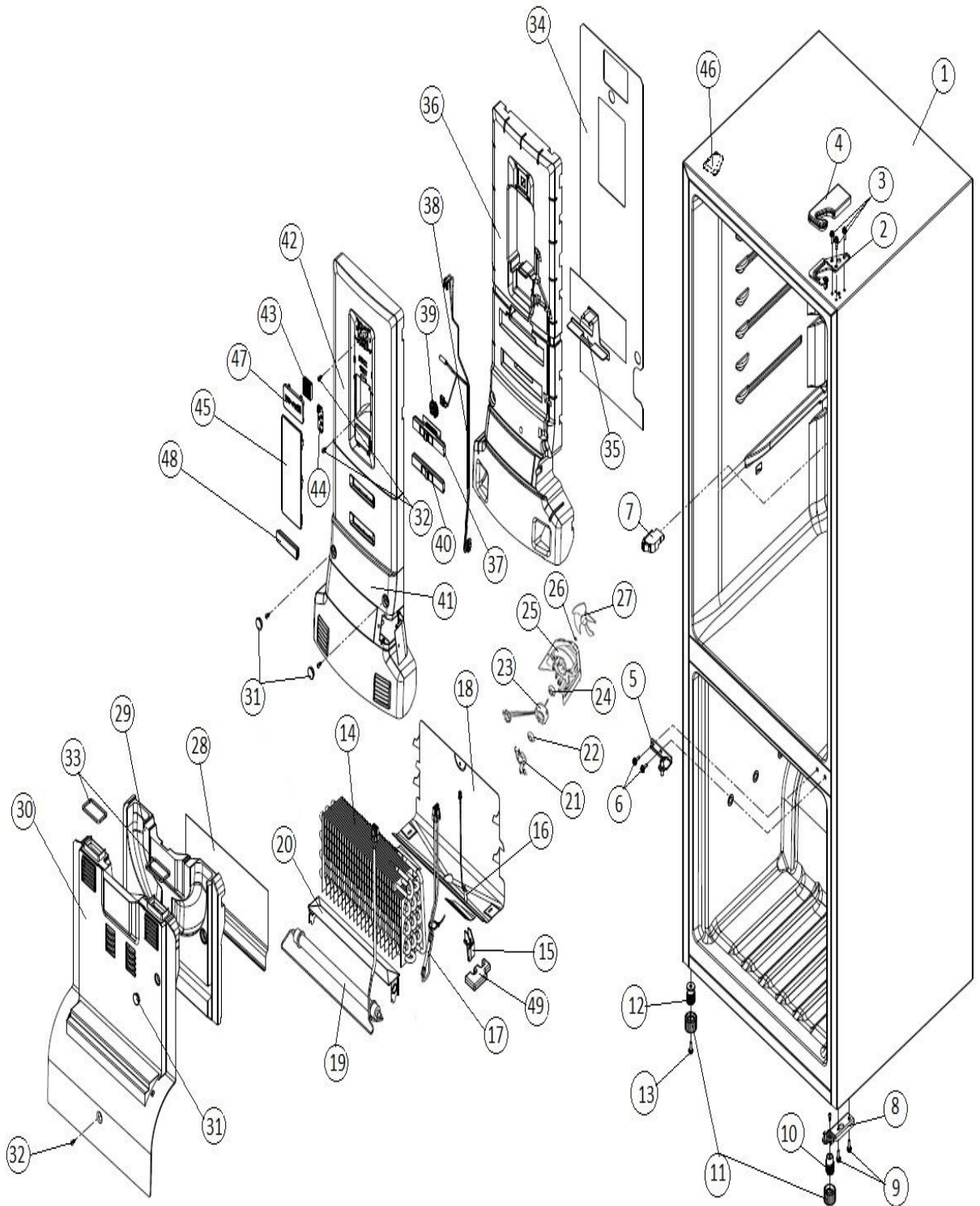
Always turn off and unplug the machine before detaching any parts.

When servicing machines, do not remove ANY detachable parts while the machine is powered. The reason is internal faults may cause shorts to components that are normally at low voltage presenting a shock hazard.

Fridge-freezers,
CKD-products

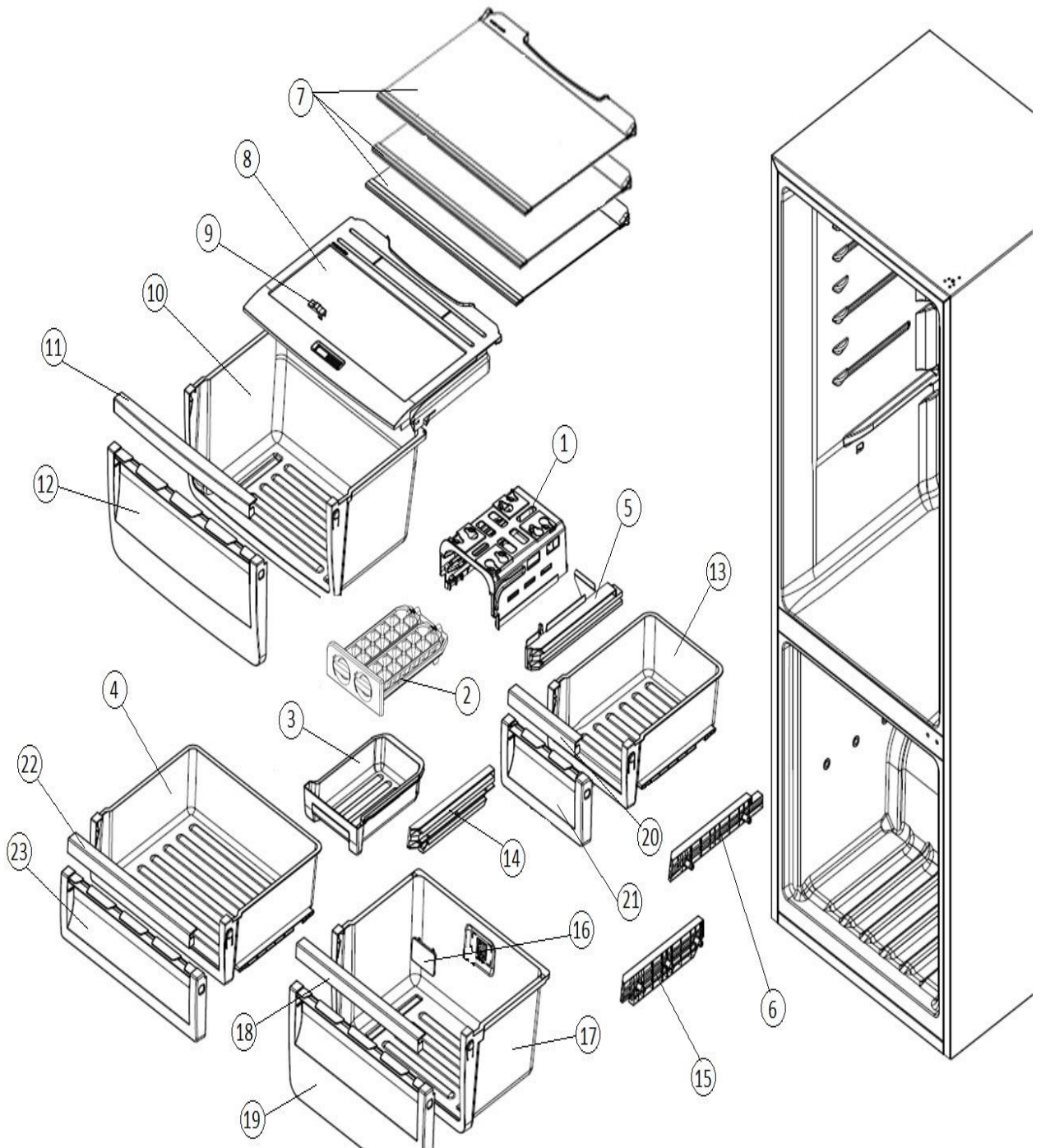
Electrolux Thailand Co.,Ltd.
1910 Electrolux Building
New Petchburi Rd. Bangkok
Huaykwang
Bangkok , 10310
Tel : +662 725 9000

Publication-No.
160316



Pos.	Part No.	Description	EBB3200MG XVN PNC 925060217 00	EBB3200MG XPH PNC 925060218 00	EBB3200MG XTH PNC 925060221 00	EBB3200MG XID PNC 925060222 00
1	811991722	CABINET FOAMED BF320 B+ GR	1	1	1	1
2	811999401	HINGE TOP RIGHT	1	1	1	1
3	811949401	SCREW TRILOB M5X16	3	3	3	3
4	811998801	HINGE TOP COVER RIGHT GR	1	1	1	1
5	811999201	HINGE CENTRE RIGHT	1	1	1	1
6	811949401	SCREW TRILOB M5X16	2	2	2	2
7	811943002	SWITCH DOOR TF SINGLE	1	1	1	1
8	811999101	HINGE BOTTOM BASE RIGHT	1	1	1	1
9	811949401	SCREW TRILOB M5X16	2	2	2	2
10	811996202	FEET BASE HINGE	1	1	1	1
11	811998902	FEET LEVER	2	2	2	2
12	811999002	FEET BASE	1	1	1	1
13	811949401	SCREW TRILOB M5X16	1	1	1	1
14	811982801	EVAPORATOR ST 8 PASSES	1	1	1	1
15	811975101	BRACKET SENSOR BF	1	1	1	1
16	811942602	HARNESS-ASSY SUB SENSOR BF	1	1	1	1
17	811944701	HARNESS-ASSY SUB THERMO FUSE	1	1	1	1
18	811983001	SUPPORT HEATER BF	1	1	1	1
19	811981701	HEATER-ASSY DEFROST R600A-240V	1	1	1	1
20	811982902	COVER HEATER BF R600A	1	1	1	1
21	A02164801	RETAINER CLIP	1	1	1	1
22	1446048	GROMMET, FAN MOUNTING	1	1	1	1
23	809069203	MOTOR FAN PANASONIC DC 3W	1	1	1	1
24	A02113401	GROMMET FAN PANA DC FAN	1	1	1	1
25	811975001	SHROUD FAN BF	1	1	1	1

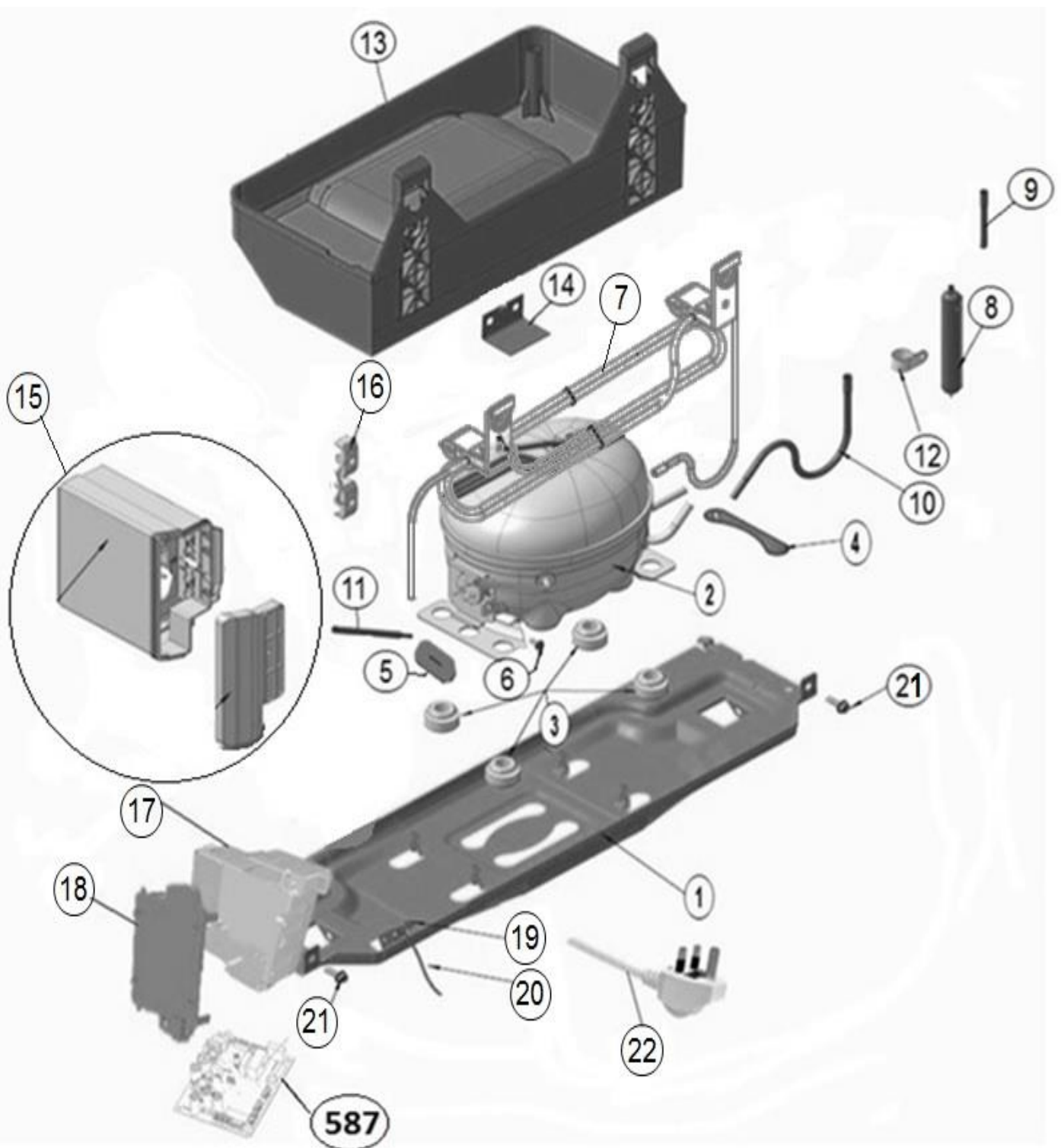
Pos.	Part No.	Description	EBB3200MG XVN PNC 925060217 00	EBB3200MG XPH PNC 925060218 00	EBB3200MG XTH PNC 925060221 00	EBB3200MG XID PNC 925060222 00
26	1451297	WASHER SLINGER NYLON	1	1	1	1
27	811699602	BLADE FAN,NAT	1	1	1	1
28	811948201	TAPE ALUMINUM EVC REAR BF	1	1	1	1
29	811970101	DUCT EVAPORATOR MAIN BF	1	1	1	1
30	811970201	COVER EVAPORATOR BF	1	1	1	1
31	811971601	COVER SCREW	3	3	3	3
32	811949503	SCREW TRUSS 4.2X13	5	5	5	5
33	811950601	SEAL FOAM 6X8	2	2	2	2
34	811909301	SEAL FOAM REAR DUCT MF BF S	1	1	1	1
35	811975201	BAFFLE SLIDER BACK BF	1	1	1	1
36	811970701	DUCT MULTIFLOW BF260L/300L	1	1	1	1
37	811968801	SLIDE CONTROL TEMP BF	1	1	1	1
38	A01097201	HARNESS-ASSY MFLOW BF BAS LED	1	1	1	1
39	811968901	GEAR CONTROL TEMP	1	1	1	1
40	811974801	BAFFLE SLIDER FRONT BF	1	1	1	1
41	A04363401	COVER MULTIFLOW LOWER BF B SCR	1	1	1	1
42	811971101	COVER MFLOW UPPER BF 260L/300L	1	1	1	1
43	811930303	DEODORIZER NANO COPPER	1	1	1	1
44	811943801	PCBA AUX LIGHTING LED HSLB	1	1	1	1
45	811971501	LENS MULTIFLOW TF	1	1	1	1
46	811996401	COVER TOP CABINET WH GR	1	1	1	1
47	811930407	COVER DEODORIZER BLUE FT	1	1	1	1
48	811969001	SLIDE CONTROL TEMP	1	1	1	1
49	811975501	CLAMP CABLE PROTECTOR BF	2	2	2	2



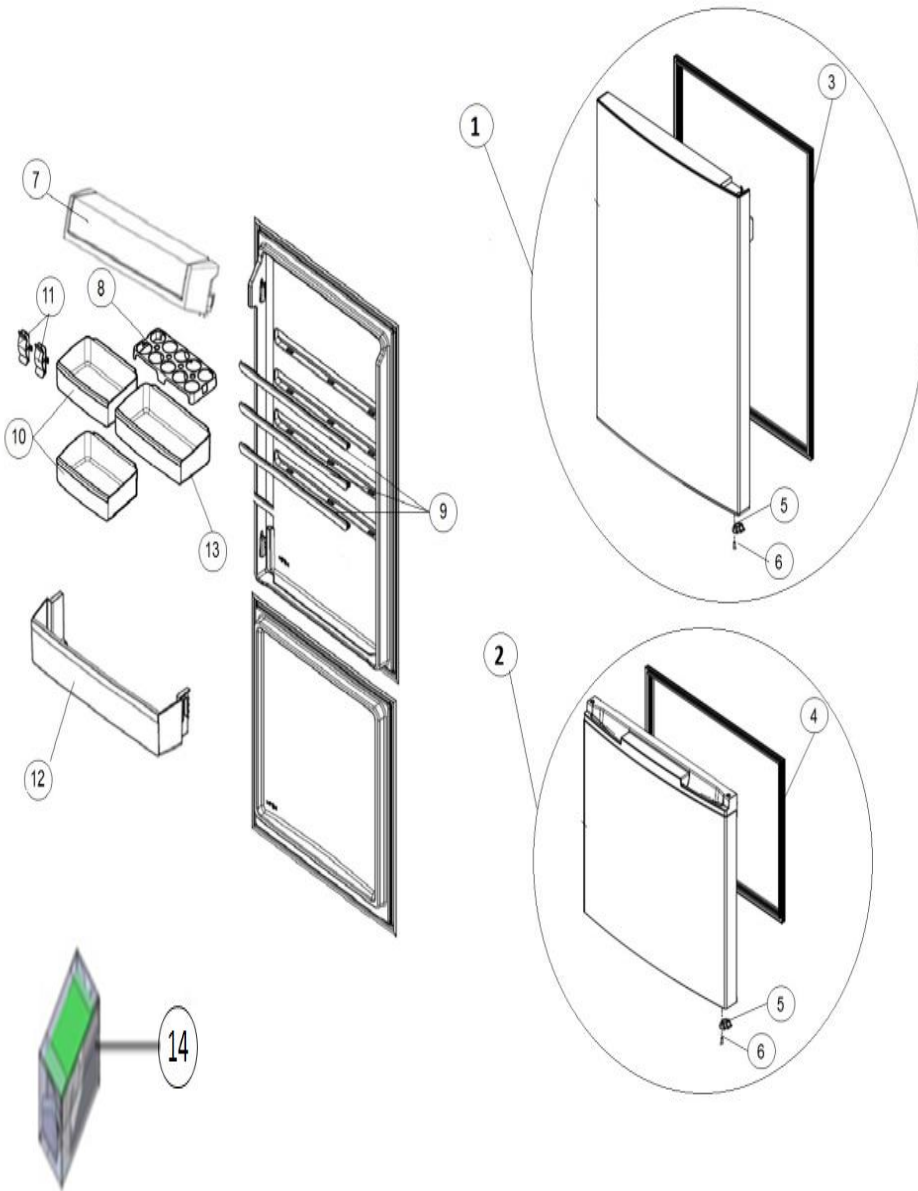
Pos.	Part No.	Description	EBB3200MG XVN PNC 925060217 00	EBB3200MG XPH PNC 925060218 00	EBB3200MG XTH PNC 925060221 00	EBB3200MG XID PNC 925060222 00
1	811957001	SUPPORT ICE T&S	1	1	1	1
2	811956701	T&S ASSY WHITE	1	1	1	1
3	811956601	BIN ICE PACIFIC CLEAR	1	1	1	1
4	811952301	DRAWER MID BODY FZR BF60W L	1	1	1	1
5	811952001	RAIL T&S SUPPORT BF60W L	1	1	1	1
6	811963501	SLIDE MEAT FZR BF60W L	1	1	1	1
7	A02623002	GLASS SHELF ASSY 60W	3	3	3	3
8	811954001	COVER CRISPER BF60W B	1	1	1	1
9	811959201	KNOB HUMIDIFIER	1	1	1	1
10	811953801	CRISPER BODY BF60W	1	1	1	1
11	811959801	CRISPER HANDLE TF 60W	1	1	1	1
12	811953701	CRISPER FRONT BF60W	1	1	1	1
13	811952101	DRAWER MEAT BODY FZR BF60W L	1	1	1	1
14	811962601	SLIDE LOWER FZR LEFT BF60W L	1	1	1	1
15	811962602	SLIDE LOWER FZR RIGHT BF60W L	1	1	1	1
16	811930401	COVER DEODORIZER WHITE	1	1	1	1
17	811952501	DRAWER LOWER BODY FZR BF60W	1	1	1	1
18	811962301	HANDLE DRAWER FZR BF60W	1	1	1	1
19	811952701	DRAWER LOWER FRONT FZR BF60W	1	1	1	1
20	811962201	HANDLE MEAT FZR BF60W L	1	1	1	1
21	811952201	DRAWER MEAT FRONT FZR BF60W L	1	1	1	1
22	811962301	HANDLE DRAWER FZR BF60W	1	1	1	1
23	811952401	DRAWER MID FRONT FZR BF60W L	1	1	1	1

Model : EBB3200MG






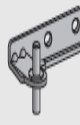


Ex. View Drawing Compressor Assembly



Pos.	Part No.	Description	EBB3200MG XVN PNC 925060217 00	EBB3200MG XPH PNC 925060218 00	EBB3200MG XTH PNC 925060221 00	EBB3200MG XID PNC 925060222 00
1	811992301	BASE COMPRESSOR 54W	1	1	1	1
2	A04332401	COMPRESSOR VTH1111Y	1	1	1	1
3	811978901	GROMMET COMPRESSOR	4	4	4	4
4	811998601	CLAMP COMPRESSOR	1	1	1	1
5	221215703	MOTOR BLOCK PLATE	1	1	1	1
6	A01075101	SCREW TAPPING M4X0.7X10	1	1	1	1
7	A03561501	TUBE PAN UNIVERSAL TF ASSY	1	1	1	1
8	1441189	DRYER	1	1	1	1
9	808293603	TUBE PROCESS 100MM	1	1	1	1
10	A03331501	TUBE SUCTION EXTENSION JIAXIPE	1	1	1	1
11	A03885402	TUBE EXTRA	1	1	1	1
12	811978201	CLAMP DRYER	1	1	1	1
13	A03365701	PAN DRAIN UNIVERSAL	1	1	1	1
14	A03592401	BRACKET L SUPPORT UPAN	1	1	1	1
15	A02557812	PCBA VSCC FLEX 2	1	1	1	1
16	808364908	CABLE CLAMP FLEX DRIVE	1	1	1	1
587	97392506021700	Config Software: PCBA_P_ERF1600 FCT FOR PNC 925060217 ELC00	1	-	-	-
587	97392506021800	Config Software: PCBA_P_ERF1600 FCT FOR PNC 925060218 ELC00	-	1	-	-
587	97392506022100	Config Software: PCBA_P_ERF1600 FCT FOR PNC 925060221 ELC00	-	-	1	-
587	97392506022200	Config Software: PCBA_P_ERF1600 FCT FOR PNC 925060222 ELC00	-	-	-	1
587	A01860302	Non Config Software: PCBA_P_ERF1600 FCT	1	1	1	1
17	A03547501	HOUSING BOX PCB	1	1	1	1
18	A03547601	COVER BOX PCB	1	1	1	1
19	807665901	SCREW TRILOB M3X6	1	1	1	1
20	811942901	HARNESS-ASSY SUB EARTH	1	1	1	1
21	811949401	SCREW TRILOB M5X16	2	2	2	2
22	A03593201	POWERCORD INVERTER REF VN	1	-	-	-
22	A03593301	POWERCORD INVERTER REF PH	-	1	-	-
22	A03593101	POWERCORD INVERTER REF TH	-	-	1	-
22	A03592901	POWERCORD INVERTER REF ID	-	-	-	1

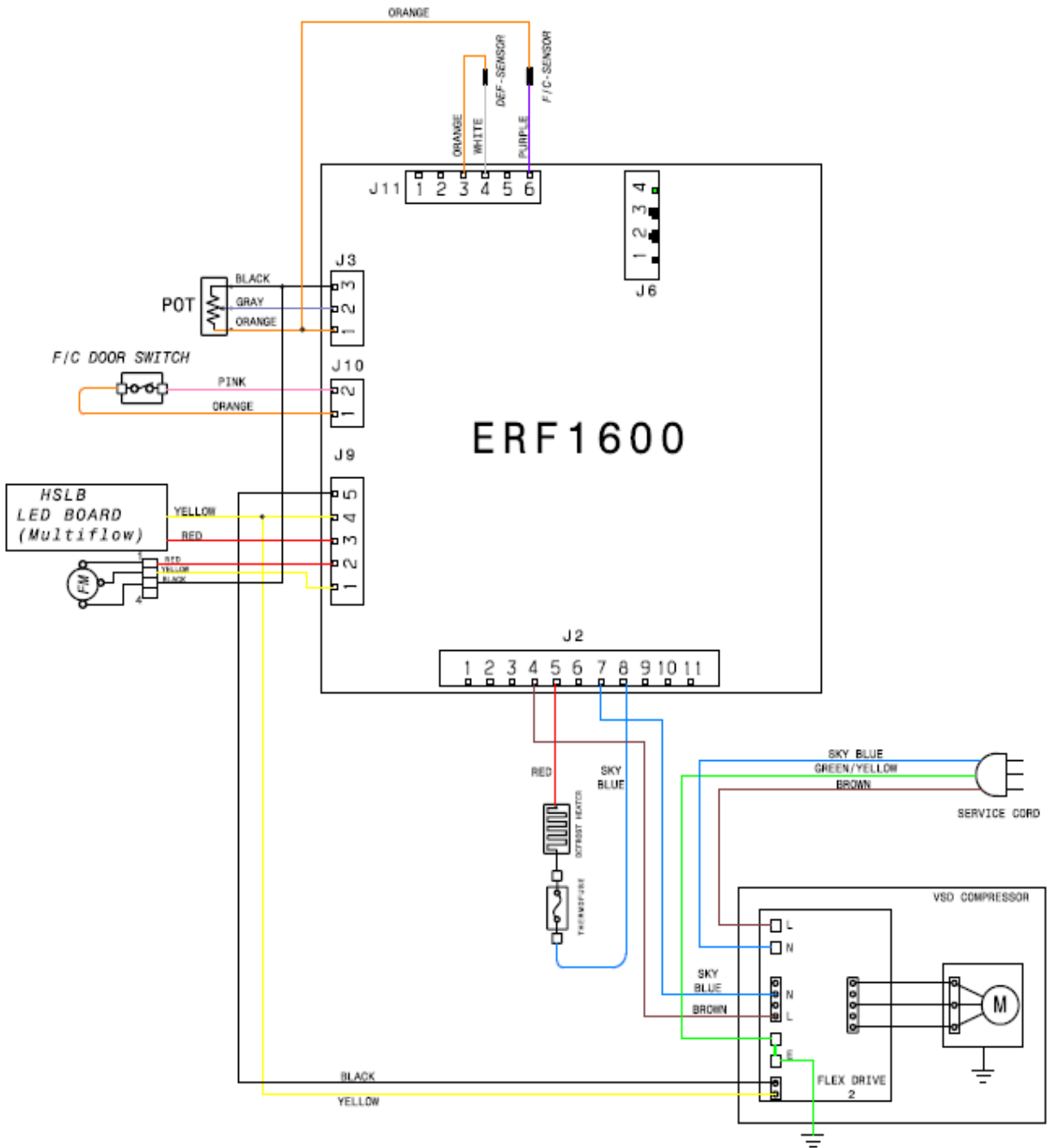


KIT CONTENTS

	DESCRIPTION	QTY
	Cover top cabinet w/ GR	1
	Cover top cabinet w/ WHT	1
	Hinge top cover left GR	1
	Hinge top cover left WHT	1
	Hinge top left	1
	Hinge centre left	1
	Hinge bottom base left	1
	Door auto closer LH	2

NOTE: Keep kit parts separate from other parts as you disassemble them to avoid mix-ups.

Pos.	Part No.	Description	EBB3200MG XVN PNC 925060217 00	EBB3200MG XPH PNC 925060218 00	EBB3200MG XTH PNC 925060221 00	EBB3200MG XID PNC 925060222 00
1	A05354421	DOOR SPARE FC BF 320 RF SL	1	1	1	1
2	A05354420	DOOR SPARE FZR BF BOW RF SL	1	1	1	1
3	811988511	GASKET FC BF320L	1	1	1	1
4	811988504	GASKET FZR BF60W	1	1	1	1
5	811988701	BEARING AUTO CLOSER R	2	2	2	2
6	811948801	SCREW COUNTERSUNK M4.8X19	2	2	2	2
7	811960901	BIN DAIRY FULL ASS'Y BF60W	1	1	1	1
8	807489801	TRAY EGG 10	1	1	1	1
9	811986803	RAIL DOOR SUPPORT 60W WHT	3	3	3	3
10	A02345502	BIN DOOR FLEX 1/2 EL	2	2	2	2
11	811960601	CLIP BAG DOOR	2	2	2	2
12	A02345202	BIN DOOR BOTTLE 60W EL	1	1	1	1
13	A02345402	BIN DOOR FLEX 2/3 EL	1	1	1	1
14	807558001	DOOR CONVERSTION KIT WH	1	1	1	1



SAFETY WARNING

Always turn off and unplug the machine before detaching any parts.

When servicing machines, do not remove ANY detachable parts while the machine is powered. The reason is internal faults may cause shorts to components that are normally at low voltage presenting a shock hazard.

Exploded view no.: P92506022100
P00003104992

Matrix	PNC	ELC	ProdDate	Model
A	925060221	00	20160401	EBB3200MG XTH

Pos	Part No.	Matrix	Description
------------	-----------------	---------------	--------------------